



# AIR-FLAT SPRAY NOZZLE

The air-flat spray nozzle is ideally employed in production or control processes in which the use of targeted air stream is necessary. Applying cooled or heated air, the bundled air jet can precisely control, cool, clean or warm workpieces, materials or surfaces.

## STANDARD – SPRAY ANGLE

60°, 90°

other angles on request.



## POSSIBLE APPLICATIONS / FIELD OF APPLICATION

- cleaning of conveyor
- energy technology
- cleaning systems
- sorting facility
- spraying on moving objects

## AVAILABLE IN THE FOLLOWING MATERIALS

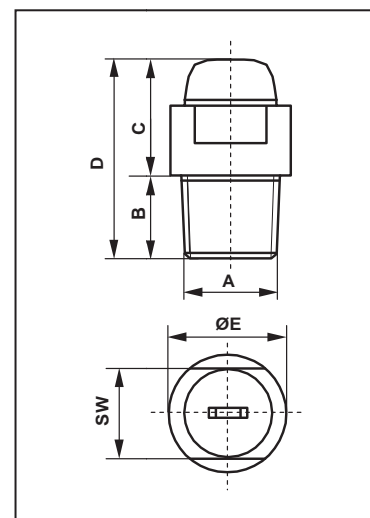
### Stainless Steel

1.4305 (X8CrNiS18-9)

### non-ferrous metal

brass

other material on request.



## DIMENSIONS

type	A	B	C	D	ØE	SW
FEL 01	Rc 1/8"	8 mm	13 mm	21 mm	13 mm	8 mm
FEL 02	Rc 1/4"	11	16	27	17	13



# AIR-FLAT SPRAY NOZZLE

## CAPACITY CHART OF AIR FLAT SPRAY NOZZLE (tapered thread)

capacities in Nm<sup>3</sup>/h by following pressures

type	thread	1 bar	2 bar	3 bar	4 bar (test pressure)	6 bar	8 bar	10 bar
FEL 01	Rc1/8"	0.64	0.91	1.25	1.60	1.83	2.18	2.53
		1.42	2.05	2.70	3.30	4.00	4.60	5.30
		2.05	3.10	4.20	5.00	6.40	7.40	8.50
		2.73	4.04	5.26	6.80	8.10	9.70	11.20
FEL 02	Rc1/4"	4.90	6.90	8.50	9.80	12.00	13.90	15.50
		7.50	10.60	13.00	15.00	18.40	21.20	23.70
		11.00	15.60	19.10	22.00	26.90	31.10	34.80
		15.50	21.90	26.85	31.00	38.00	43.80	49.00
		22.50	31.80	39.00	45.00	55.10	63.60	71.15

other capacities on request.

## FOR ORDERING WE NEED FOLLOWING INFORMATION

### Field of application

medium to spray (viscosity)  
fitting position / spray distance nozzle – spray area  
temperature range  
frequency range

### Nozzle specification

type of material  
desired spray angle  
nozzle type  
connection thread  
desired capacity (l/min, l/h)  
operating pressure (bar)

### Jato-Düsenbau AG

Täschmattstrasse 23, CH-6015 Luzern, Switzerland, Tel: +41 41 269 88 30 Fax: +41 41 269 88 31 www.jato.ch info@jato.ch

VER.03/16