



# FULL CONE NOZZLE VKI



## STANDARD – SPRAY ANGLE

60°, 90°, 120°  
other angles on request.



## POSSIBLE APPLICATIONS

air – and gas washing  
flue gas washing  
cleaning systems  
tank cooling  
foam control  
washing systems  
Filling layer spraying

## FIELD OF APPLICATION

steel production  
food industry  
chemistry  
pharma  
energy technology  
dust control

## AVAILABLE IN THE FOLLOWING MATERIALS

### Stainless Steel

1.4305 (X8 CrNiS 18-9)  
1.4435 (X2 CrNiMo 18-14-3)

### Plastics

\*PVC  
\*PTFE with glass fibers  
\*POM  
\*PP  
\*not available for type **VKI 01**

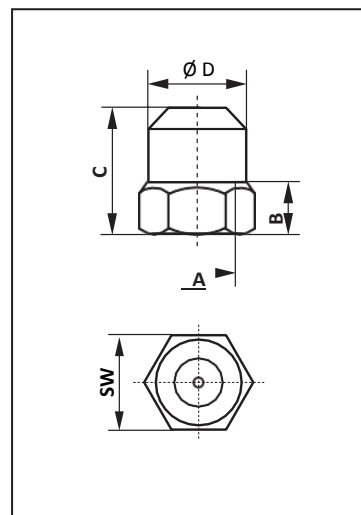
### Non-ferrous material

brass

other materials on request.

## DIMENSIONS

| type   | A<br>internal | B<br>mm | C<br>Mm | Ø D<br>mm | SW<br>mm |
|--------|---------------|---------|---------|-----------|----------|
| VKI 01 | R 1/8"        | 8.00    | 18.50   | 16.00     | 17       |
| VKI 02 | R 1/4"        | 11.80   | 26.00   | 19.00     | 20       |
| VKI 03 | R 3/8"        | 11.70   | 26.70   | 21.00     | 22       |
| VKI 04 | R 1/2"        | 16.00   | 35.00   | 26.00     | 27       |
| VKI 05 | R 3/4"        | 16.50   | 41.00   | 34.00     | 35       |
| VKI 06 | R 1"          | 23.50   | 53.00   | 39/40     | 40/41    |



## Jato-Düsenbau AG

Täschmattstrasse 23, CH-6015 Luzern, Switzerland, Tel: +41 41 269 88 30 Fax: +41 41 269 88 31 www.jato.ch info@jato.ch

VER.03/16



## FULL CONE NOZZLE VKI



### CAPACITY CHART OF FULL CONE NOZZLE VKI

capacities in l/m by following pressures

| type   | thread | 1 bar | 2 bar  | 3 bar  | 4 bar<br>(Test pressure) | 6 bar | 8 bar  | 10 bar |
|--------|--------|-------|--------|--------|--------------------------|-------|--------|--------|
| VKI 01 | R 1/8" |       |        | 0.20   | 0.23                     | 0.28  | 0.33   | 0.36   |
|        |        | 0.27  | 0.38   | 0.47   | 0.54                     | 0.66  | 0.76   | 0.85   |
|        |        | 0.40  | 0.57   | 0.69   | 0.80                     | 0.98  | 1.13   | 1.26   |
|        |        | 0.60  | 0.85   | 1.04   | 1.20                     | 1.47  | 1.70   | 1.90   |
|        |        | 0.85  | 1.20   | 1.47   | 1.70                     | 2.10  | 2.40   | 2.70   |
| VKI 02 | R 1/4" | 1.20  | 1.70   | 2.10   | 2.40                     | 2.95  | 3.40   | 3.80   |
|        |        | 1.50  | 2.10   | 2.60   | 3.00                     | 3.70  | 4.20   | 4.70   |
|        |        | 1.80  | 2.55   | 3.20   | 3.60                     | 4.40  | 5.10   | 5.70   |
|        |        | 2.50  | 3.50   | 4.30   | 5.00                     | 6.10  | 7.10   | 7.90   |
|        |        | 4.00  | 5.70   | 6.90   | 8.00                     | 9.80  | 11.30  | 12.60  |
| VKI 03 | R 3/8" | 5.20  | 7.30   | 9.00   | 10.40                    | 12.70 | 14.70  | 16.50  |
|        |        | 6.30  | 8.80   | 10.80  | 12.50                    | 15.30 | 17.70  | 19.80  |
|        |        | 7.00  | 9.90   | 12.10  | 14.00                    | 17.20 | 19.80  | 22.00  |
|        |        | 8.80  | 12.40  | 15.20  | 17.50                    | 21.50 | 24.80  | 27.70  |
|        |        | 10.00 | 14.10  | 17.30  | 20.00                    | 24.50 | 28.30  | 31.60  |
| VKI 04 | R 1/2" | 11.50 | 16.30  | 19.90  | 23.00                    | 28.20 | 32.50  | 36.40  |
|        |        | 14.50 | 20.50  | 25.00  | 29.00                    | 35.50 | 41.00  | 46.00  |
|        |        | 18.50 | 26.20  | 32.00  | 37.00                    | 45.30 | 52.50  | 58.50  |
| VKI 05 | R 3/4" | 23.50 | 33.30  | 41.00  | 47.00                    | 58.00 | 66.50  | 74.00  |
|        |        | 30.00 | 42.50  | 52.00  | 60.00                    | 73.50 | 85.00  | 95.00  |
|        |        | 35.00 | 49.50  | 60.50  | 70.00                    | 85.50 | 99.00  | 111.00 |
| VKI 06 | R 1"   | 40.00 | 56.50  | 69.50  | 80.00                    | 98.00 | 113.00 | 127.00 |
|        |        | 58.00 | 82.00  | 101.00 | 116.00                   | 142.0 | 164.00 | 183.00 |
|        |        | 75.00 | 106.00 | 130.00 | 150.00                   | 184.0 | 212.00 | 237.00 |

other capacities on request.

### FOR ORDERING WE NEED FOLLOWING INFORMATION

#### Field of application

medium to spray (viscosity)  
fitting position / spray distance nozzle – spray area  
temperature range  
frequency range

#### Nozzle specification

type of material  
desired spray angle  
nozzle type  
connection thread  
desired capacity (l/min, l/h)  
operating pressure (bar)

#### Jato-Düsenbau AG

Täschmattstrasse 23, CH-6015 Luzern, Switzerland, Tel: +41 41 269 88 30 Fax: +41 41 269 88 31 www.jato.ch info@jato.ch

VER.03/16